

# UI Bulletin #115C

## Subject: **Upfitter Circuit Provisions**

**Models Affected:** Chevrolet Silverado  
GMC Sierra

**Model Years:** 2014 and Beyond

**Date:** March 20, 2014

**Revision Date:** August 18, 2014

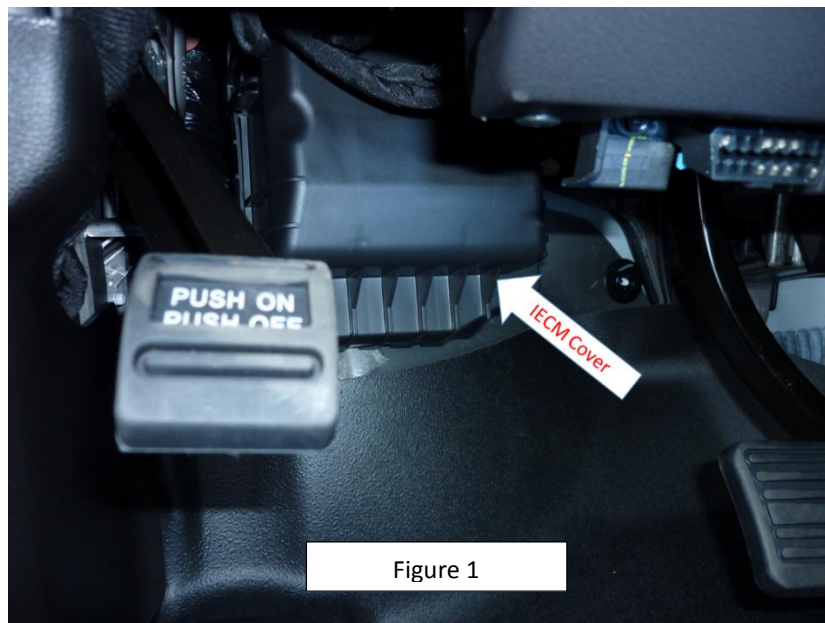
## ADVISORY:

### Condition/Concern:

Upfitters may inquire on the new 2014-2015 LD Full-size trucks and for the 2015 HD series as to where to access commonly used circuit for adding aftermarket equipment.

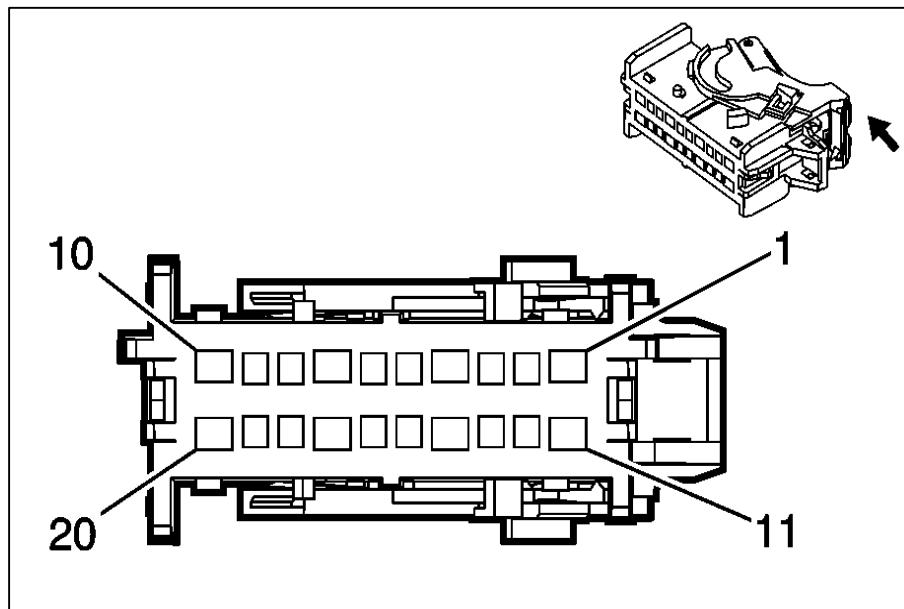
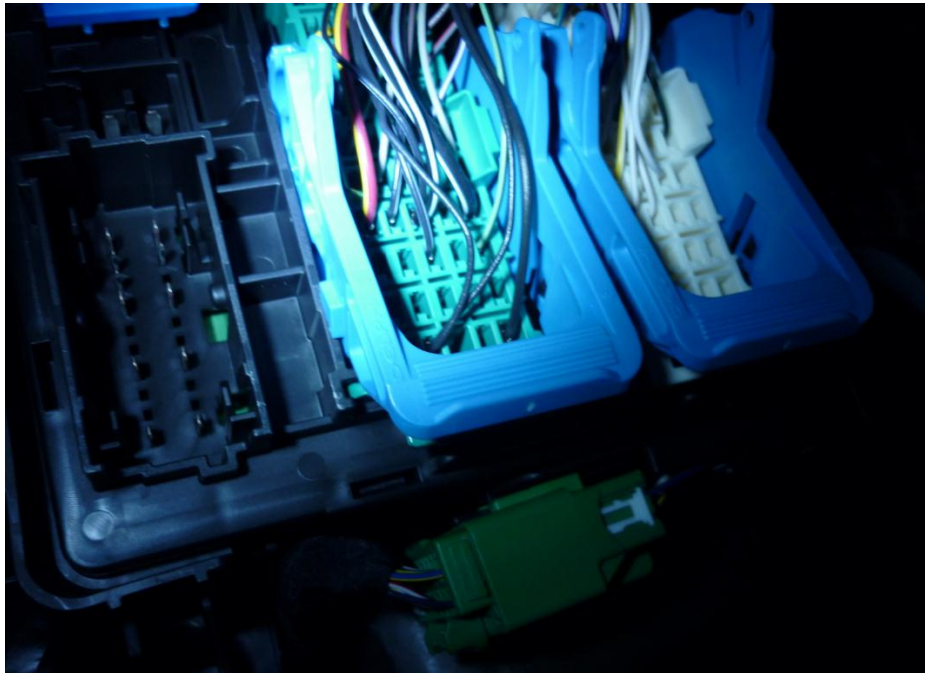
### Recommendation:

Commonly utilized circuits are available for use in the ICEM (formally referred to as the Mid-BEC or MBEC) which is located in the LH foot well, near or below the parking brake mechanism (see figure 1)



### General Motors Upfitter Integration

<http://www.gmupfitter.com> • 1-800-875-4742 (Upfitter Hotline)

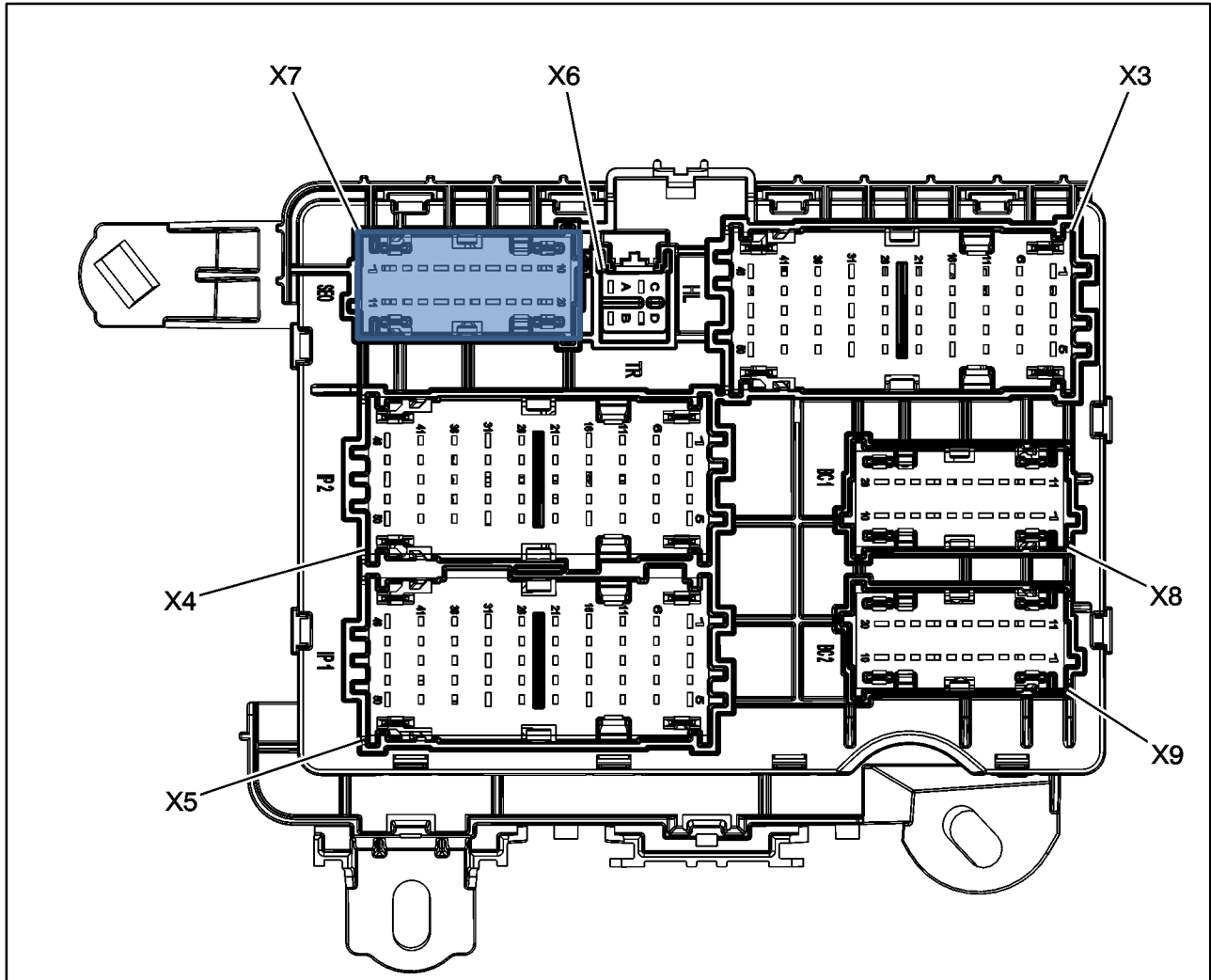


Refer to connector pin-out table for connector and terminal part number information (next page).

### General Motors Upfitter Integration

<http://www.gmupfitter.com> • 1-800-875-4742 (Upfitter Hotline)

## X61A Junction Block Top View



### General Motors Upfitter Integration

<http://www.gmupfitter.com> • 1-800-875-4742 (Upfitter Hotline)

## Connector Part Information

- Harness Type: Upfitter
- OEM Connector: 13924036
- Service Connector: Kit P/N 19328970 Includes Connector body and Lock Lever
- Description: 20-Way F 1.5, 2.8 Series (BK)

Also now available for order at GM dealers

## Terminal Part Information

Terminal Type ID	Terminated Lead	Diagnostic Test Probe	Terminal Removal Tool	Service Terminal	Tray	Core Crimp	Insulation Crimp
I	13575832	J-35616-35 (VT)	J-38125-11A	7116-4112-02	9	C	D
II	13578892	J-35616-2A (GY)	J-38125-11A	7116-4101-08	9	E	A

## X61A Junction Block - Instrument Panel X7

Pin	Size	Color	Circuit	Function/Fuse Rating	Terminal Type ID	Option
1	0		968	Upfitter Provision (30amp)(Aux. SW 4 output)	I	9L7
2-3	-	-	-	Not Occupied	-	-
4	0		967	Upfitter Provision (30amp)(Aux. SW 3 output)	I	9L7
5-6	-	-	-	Not Occupied	-	-
7	0	RD/YE	2340	Battery Positive Voltage (5 amp)*	I	-
8	0	VT/YE	43	Accessory Voltage (10 amp)*	II	-
9	0	GN	5060	Low Speed GMLAN Serial Data	II	-
10	0	BK	1050	Ground	I	-
11	0	VT/WH	1939	Run/Crank Ignition 1 Voltage (15 amp)	I	-
12-13	-	-	-	Not Occupied	-	-
14	0		966	Upfitter Provision (30amp)(Aux. SW 2 output)	I	9L7
15-16	-	-	-	Not Occupied	-	-
17	0	RD/YE	2340	Battery Positive Voltage (5 amp)*	I	-
18	-	-	-	Not Occupied	-	-
19	0	GN/GY	817	Vehicle Speed Signal (4k PPM)	II	-
20	0		965	Upfitter Provision (30amp)(Aux. SW 1 output)	I	9L7

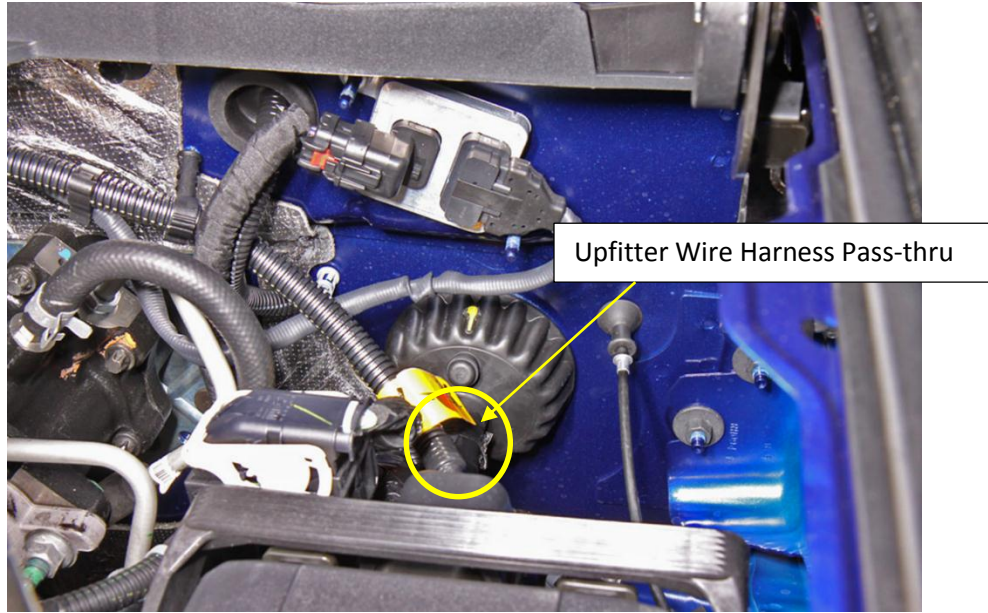
Note: The yellow shaded terminals are available signals for Upfitter usage.

\*NOTE: CIRCUITS SHOULD BE USED TO ACTIVATE A RELAY AND NOT THE ADD ON ACCESSORY DIRECTLY

## General Motors Upfitter Integration

<http://www.gmupfitter.com> • 1-800-875-4742 (Upfitter Hotline)

## Wire Harness Pass-thru location



**General Motors Upfitter Integration**  
<http://www.gmupfitter.com> • 1-800-875-4742 (Upfitter Hotline)